

ecoLENS VHO industry

A very powerful and extremely high efficient LED lighting for warehouse, retail stores and industries.

Available with different optics from narrow to flood beams. Asymmetric version also available.

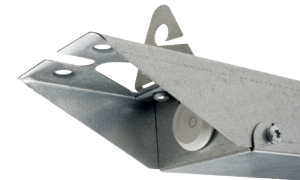
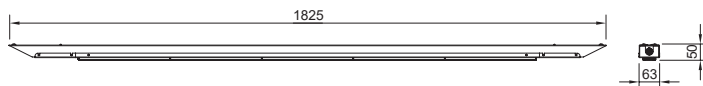
Lumen setting and energy consumption (from 47 - 85 W) to be adjusted for your project before delivery.

7-years LED and driver warranty.

Material	Powder painted steel
Colour temp [K]	3000 / 3500 K or 4000 K
Design LED life	L80 > 50 000 h (T ₀ 25°)
Driver lifetime	50 000 h
CRI	+80
Initial MacAdam	3 SDCM
Lumen range max	11 150 lm (@ 85 W)
Nominal Voltage	230/240 V, 50 Hz
Form protection	IP21. Class III. CE-approved
Weight	1,9 kg
Connection	5 p connection terminal in each end with 5x2,5 mm ² going through wiring.

Dali On request

Dimensions [mm] 1825 x 63 x 50 mm



Integrated fold-up bracket for suspending on a wire.



High efficiency optics for maximum light control.

Item No.	Description	Reflector / Beam	Painting colour	Energy consumption	Lumen output	Colour temperature, CRI	Amount/Fuse 16 A C-type	Amount/Fuse 10 A C-type
221005 830 10 1003 M - 1800	ecoLENS Industry, 830, Galv, 5x2,5 mm ²	Wide 90°	Galvanized	85 W	11 150 lm	3000 K, CRI > 80	20	12
221005 835 10 1003 M - 1800	ecoLENS Industry, 835, Galv, 5x2,5 mm ²	Wide 90°	Galvanized	85 W	11 150 lm	3500 K, CRI > 80	20	12
221005 840 10 1003 M - 1800	ecoLENS Industry, 840, Galv, 5x2,5 mm ²	Wide 90°	Galvanized	85 W	11 150 lm	4000 K, CRI > 80	20	12
221005 830 10 1003 M - 1500	ecoLENS Industry, 830, Galv, 5x2,5 mm ²	Wide 90°	Galvanized	71 W	9 590 lm	3000 K, CRI > 80	20	12
221005 835 10 1003 M - 1500	ecoLENS Industry, 835, Galv, 5x2,5 mm ²	Wide 90°	Galvanized	71 W	9 590 lm	3500 K, CRI > 80	20	12
221005 840 10 1003 M - 1500	ecoLENS Industry, 840, Galv, 5x2,5 mm ²	Wide 90°	Galvanized	71 W	9 590 lm	4000 K, CRI > 80	20	12
221005 830 10 1003 M - 1300	ecoLENS Industry, 830, Galv, 5x2,5 mm ²	Wide 90°	Galvanized	61 W	8 900 lm	3000 K, CRI > 80	20	12
221005 835 10 1003 M - 1300	ecoLENS Industry, 835, Galv, 5x2,5 mm ²	Wide 90°	Galvanized	61 W	8 900 lm	3500 K, CRI > 80	20	12
221005 840 10 1003 M - 1300	ecoLENS Industry, 840, Galv, 5x2,5 mm ²	Wide 90°	Galvanized	61 W	8 900 lm	4000 K, CRI > 80	20	12
221005 830 10 1003 M - 1000	ecoLENS Industry, 830, Galv, 5x2,5 mm ²	Wide 90°	Galvanized	47 W	6 700 lm	3000 K, CRI > 80	26	15
221005 835 10 1003 M - 1000	ecoLENS Industry, 835, Galv, 5x2,5 mm ²	Wide 90°	Galvanized	47 W	6 700 lm	3500 K, CRI > 80	26	15
221005 840 10 1003 M - 1000	ecoLENS Industry, 840, Galv, 5x2,5 mm ²	Wide 90°	Galvanized	47 W	6 700 lm	4000 K, CRI > 80	26	15

Caleidoscope