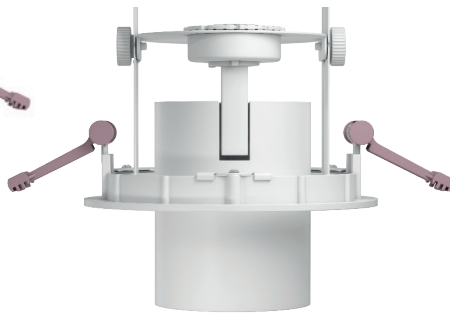


# smartLED™ Downlight, DBR



Retractable pop-down and rotatable LED downlight.

Light fixture body made of aluminium. Passive cooling of the LED chip for optimum service life and reliability.

MIRO Silver reflector that creates a well-balanced light pattern with very high efficiency.

Available in a variation of LED spectrum colours upon request.

3,0 meter low voltage cable from downlight to driver included. Extension cables

7-years warranty.

ø 137 mm



**Material**  
**Design LED life**  
**CRI**  
**Lumen**  
**Energy**  
**Initial MacAdam**  
**Nominal Voltage**  
**Form protection**  
**Weight**  
**Colors**  
**Dimensions [mm]**

Die-cast aluminium  
 L90 50 000 h (T<sub>a</sub> 25°)  
 90  
 2950 lm  
 23 W  
 2 SDCM  
 230/240 V, 50/60 Hz  
 IP 20. Class III. CE-approved  
 0,76 kg  
 White, Grey, Black  
 ø 148 x H 140 mm

### 3-channel power supply

3 pcs of downlights can be connected to one LED-driver. Low voltage extension cable available for maximum range in ceiling installations.



Item No.	Description	Painting colour	Power	Lumen	Reflector	LED Colour	Amount/ Fuse 16 A C-type	Amount/ Fuse 16 A B-type
222 39aaa 22 0b DBR-10b	smartLED, Medium 22°, 3000 K B BBL W. Downlight Box DBR-10(b)	b =1 White b =2 Grey b =3 Black	23 W	2950 lm	20° (Medium)	aaa = 930 (3000 K B BBL) aaa = 935 (3500 K B BBL) aaa = 940 (4000 K)	45	27
222 3aaa 38 0b DBR-10b	smartLED, Flood 38°, 3000 K B BBL W. Downlight Box DBR-10(b)	b =1 White b =2 Grey b =3 Black	23 W	2950 lm	38° (Flood)	aaa = 930 (3000 K B BBL) aaa = 935 (3500 K B BBL) aa = 940 (4000 K)	45	27
222	smartLED Driver 3x600 mA ON/OFF	White					15	9
222e	eSAVE Driver 3x600 mA	White					17	10
031-020-02	2,0 m (2x0,72 mm2) 2 pin EU plug + IEC C7, WHITE	White						
031-010-C8C7-2M	Power Cable 2,0 m (2x0,72 mm2) C8 + C7, White	White						
A-3022	2,0 M extension cable for smartLED spotlights. Male/female connectors.	White						

## Caleidoscope