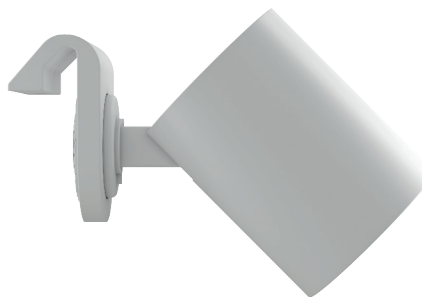


smartLED™ Edge



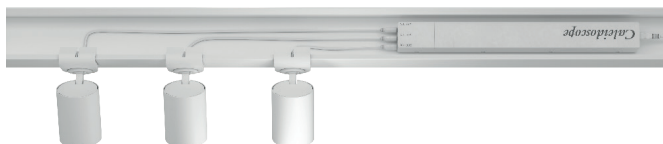
smartLED Edge spotlight with unique magnetic hook for easy and quick attachment to the edge of a grid ceiling system type Fixpoint 100-80 or similare.

Lightfixture body made of aluminium. Passive cooling of the LED source for optimum service life and reliability.

MIRO Silver reflector that creates a well balanced light pattern with very high efficiency.

Available in a variation of LED spectrum colours upon request.

3,0 meter lowvoltage cable from downlight to driver included. Extension cables. 7-years warranty.

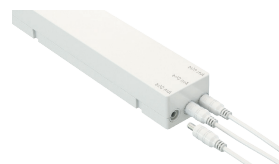


Material
Design LED life
CRI
Lumen
Energy
Initial MacAdam
Nominal Voltage
Form protection
Weight
Colors
Dimensions [mm]

Die-cast aluminium
 L90 50 000 h (T_a 25°)
 90
 2950 lm
 23 W
 2 SDCM
 230/240 V, 50/60 Hz
 IP 20, Class III, CE-approved
 0,42 kg
 White, Grey, Black
 ø 80 x H 104 mm

3-channel power supply

3 pcs of light source can be connected to one LED-driver. Low voltage extension cable available for maximum range in



Item No.	Description	Painting colour	Power	Lumen	Reflector	LED Colour	Amount/ Fuse 16 A C-type	Amount/ Fuse 16 A B-type
222 3aaa 22 0b EH00b	smartLED, Medium 22°, 3000 K B BBL W.	b =1 White b =2 Grey b =3 Black	23 W	2950 lm	22° (Medium)	aaa = 930 (3000 K B BBL) aaa = 935 (3500 K B BBL) aaa = 940 (4000 K)	45	27
222 3aaa 38 0b EH00b	smartLED, Flood 38°, 3000 K B BBL W.	b =1 White b =2 Grey b =3 Black	23 W	2950 lm	38° (Flood)	aaa = 930 (3000 K B BBL) aaa = 935 (3500 K B BBL) aaa = 940 (4000 K)	45	27
222	smartLED Driver 3x600 mA ON/OFF	White					15	9
222e	eSAVE Driver 3x600 mA	White					17	10
031-020-02	2,0 m (2x0,72 mm2) 2 pin EU plug + IEC C7, WHITE	White						
031-010-C8C7-2M	Power Cable 2,0 m (2x0,72 mm2) C8 + C7, White	White						
A-3022	2,0 M extension cable for smartLED spotlights. Male/female connectors.	White						

Caleidoscope