

BRUKSANVISNING - SMARTLED SYSTEM MED openCELL UNDERTAK

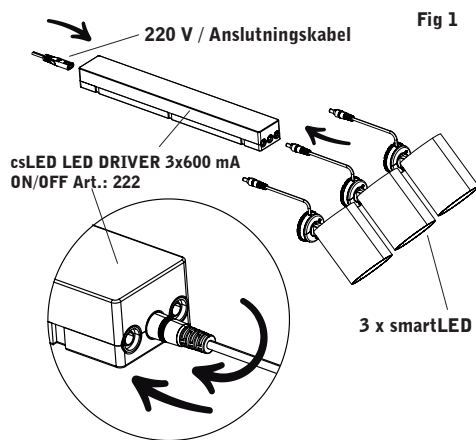
smartLED system serie:

222 3930 xx 01
222 3935 xx 01
222 3940 xx 01

Läs noggrant igenom alla instruktioner innan installation påbörjas!

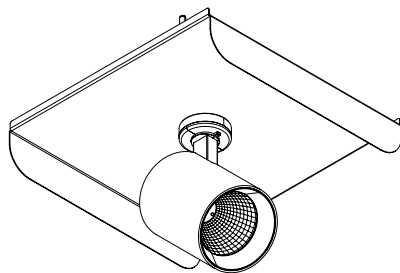
VIKTIGT:

1. Montera spotlight tillsammans med montageanordning enligt instruktion.
2. Anslut strömkabel till csLED drivdonet enligt fig 1.
3. Anslut 3 st smartLED spotlights till drivdon typ 222 (3x600 mA). OBS! Kontrollera att strömstyrkan (mA) stämmer med drivenhet och spotligthen.
4. Placera drivdonet på en väl ventilerad plats.
5. Placera ut spotligthen genom att använda något av de anpassade montage tillbehören.
6. Anslut huvudkabel från drivenhet till huvudströmmen.



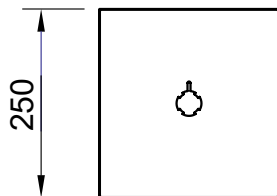
smartLED med montage tillbehör:
DBX-250-01 .. DBX-100-01

(01 = VIT, 02 = GRÅ, 03 = SVART)



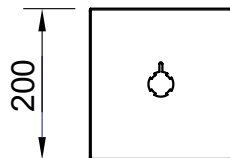
För openCELL
250x250 mm

DBX-250-01
DBX-250-02
DBX-250-03



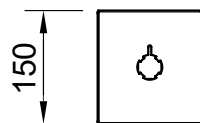
För openCELL
200x200 mm

DBX-200-01
DBX-200-02
DBX-200-03



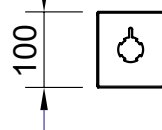
För openCELL
150x150 mm

DBX-150-01
DBX-150-02
DBX-150-03



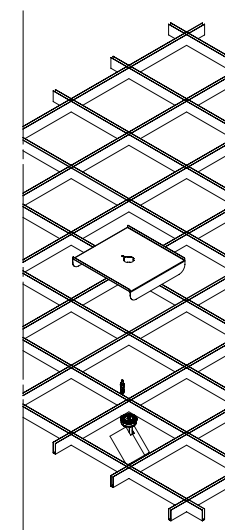
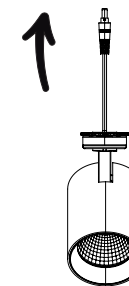
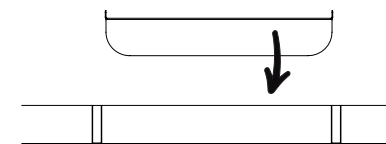
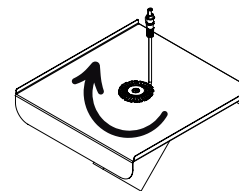
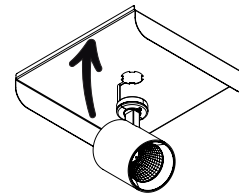
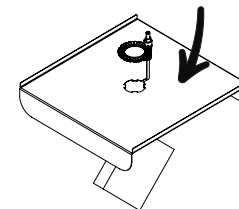
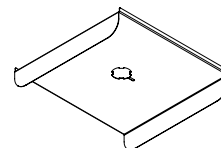
För openCELL
100x100 mm

DBX-10-01
DBX-100-02
DBX-100-03



smartLED med montage tillbehör:

DBX-250-01, DBX-250-02, DBX-250-03
DBX-200-01, DBX-200-02, DBX-200-03
DBX-150-01, DBX-150-02, DBX-150-03
DBX-100-01, DBX-100-02, DBX-100-03



UNDERHÅLL:

Rengör armatur med torr trasa och dammsug försiktigt bort dammpartiklar i reflektorn varje år.



SWEDISH
PATENTED
INNOVATION

Voltage: 240 Vac - 50/60Hz
IP20 Class II
Ta 25° C
LED: 23 W / 600 mA
Aluminium body

ENGLISH: INSTRUCTIONS - SMARTLED WITH openCELL CEILING SYSTEM

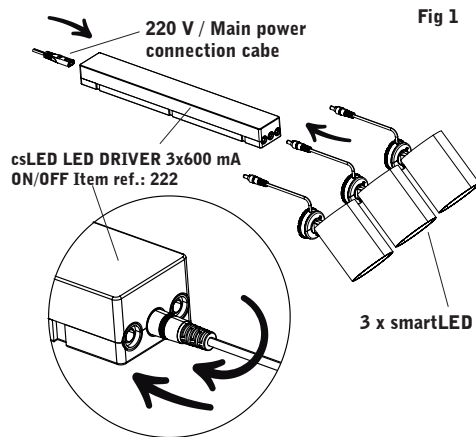
smartLED system series:

222 3930 xx 01
222 3935 xx 01
222 3940 xx 01

Carefully read all instructions before starting installation!

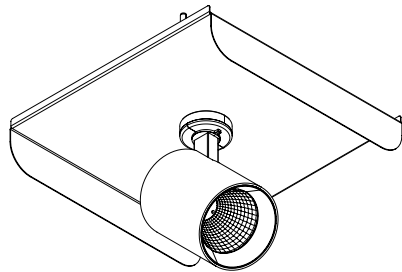
IMPORTANT!

1. Mount the spotlight together with the mounting device according to the instructions on following pages. Connect the power cable to the csLED driver according to fig 1.
2. Connect all 3 pcs of smartLED spotlights to one drive unit type 222 (3x600 mA).
3. Check that the amperage (mA) matches the drive unit and the spotlight.
4. Place the drive in a well-ventilated area.
5. Position the spotlight using one of the mounting accessories on grid ceiling or as recessed downlight.
6. Connect main cable from drive unit to main power.

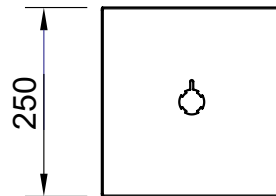


smartLED with frame DBX-250-01 ..
DBX-100-01 for openCELL systems.

(01 = White, 02 = Grey, 03 = Black)

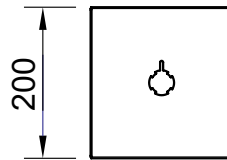


For openCELL
250x250 mm



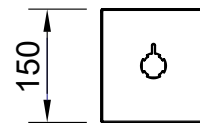
DBX-250-01
DBX-250-02
DBX-250-03

For openCELL
200x200 mm



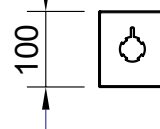
DBX-200-01
DBX-200-02
DBX-200-03

For openCELL
150x150 mm



DBX-150-01
DBX-150-02
DBX-150-03

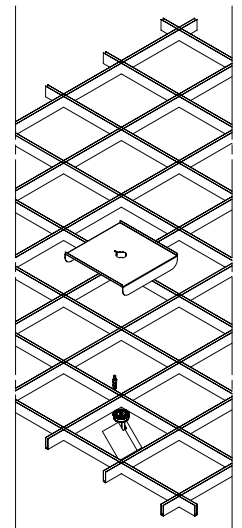
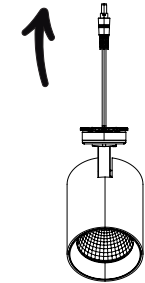
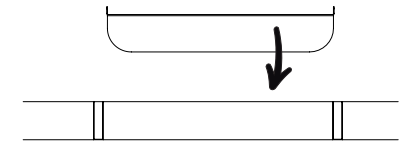
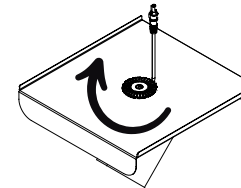
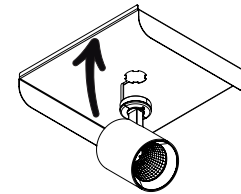
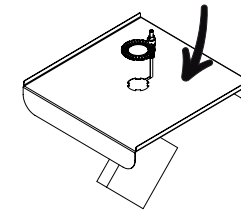
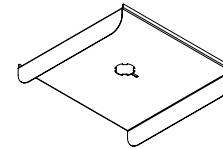
For openCELL
100x100 mm
DBX-10-01
DBX-100-02
DBX-100-03



smartLED with openCELL

accessories:

DBX-250-01, DBX-250-02, DBX-250-03
DBX-200-01, DBX-200-02, DBX-200-03
DBX-150-01, DBX-150-02, DBX-150-03
DBX-100-01, DBX-100-02, DBX-100-03



UNDERHÅLL:

Rengör armatur med torr trasa och dammsug försiktigt bort dammpartiklar i reflektorn varje år.



Voltage: 240 Vac - 50/60Hz
IP20 Class II
Ta 25° C
LED: 23 W / 600 mA
Aluminium body